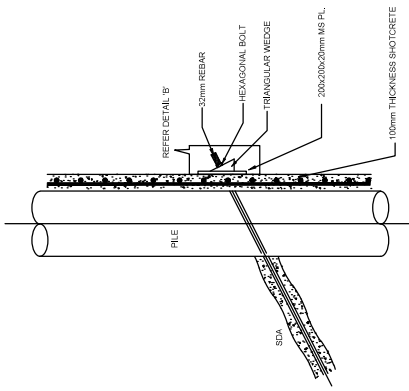
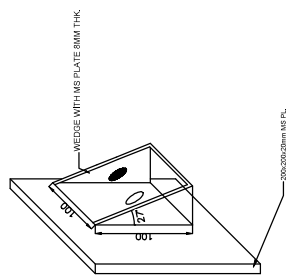


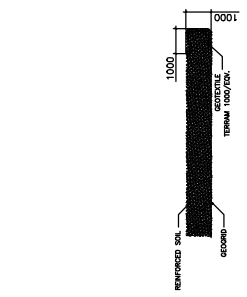
C046-000-81-47-11001



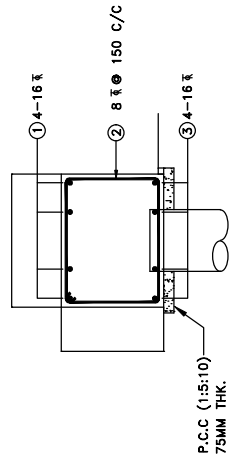
DETAIL 'A'



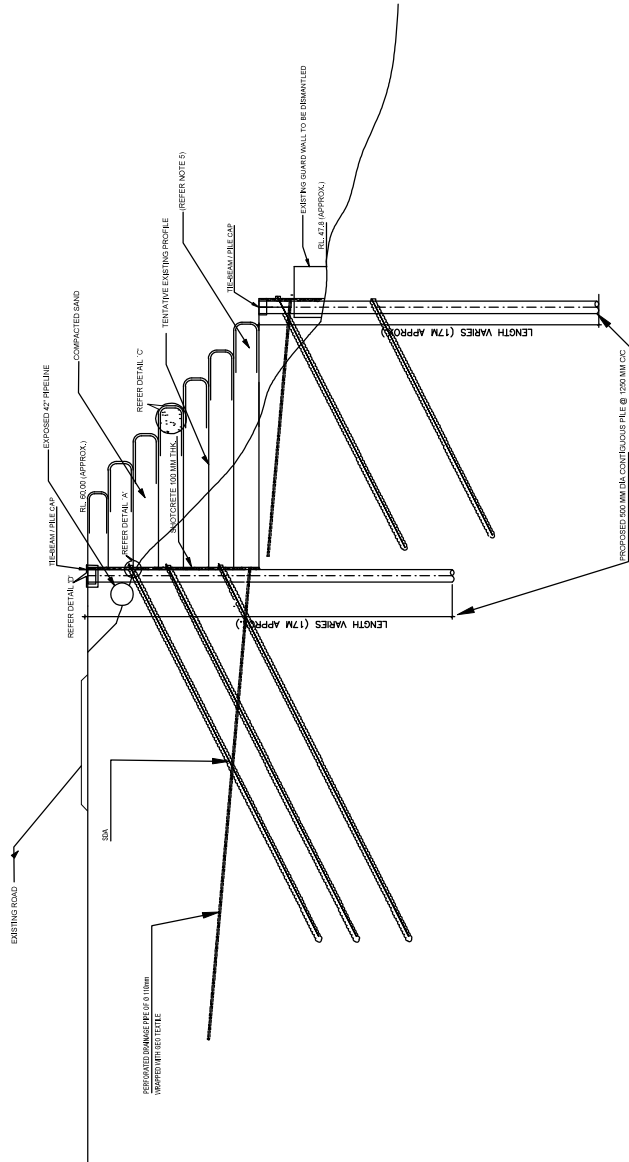
DETAIL 'B'



DETAIL 'C'



DETAIL 'D'



SECTION 1-1

- NOTES :-**
1. ALL DIMENSIONS ARE IN mm & LEVELS ARE IN M.
 2. SCHEME IS APPLICABLE THROUGHOUT THE COMPLETE STRETCH OF THE PROJECT IN THE EXPOSED AREA (~90M).
 3. GRADE OF CONCRETE SHALL BE M20.
 4. REINFORCEMENT FOR BORED PILE SHALL BE HYSD BARS (GRADE F4000).
 5. FOR DETAILS OF ALL MATERIALS AND CONSTRUCTION PROCEDURE REFER TENDER SPECIFICATION No. C046-000-81-47-307-0011, C046-000-81-47-307-0012, C046-000-81-47-307-0013, C046-000-81-47-307-0014, C046-000-81-47-307-0015, C046-000-81-47-307-0016, C046-000-81-47-307-0017, C046-000-81-47-307-0018, C046-000-81-47-307-0019, C046-000-81-47-307-0020, C046-000-81-47-307-0021, C046-000-81-47-307-0022, C046-000-81-47-307-0023, C046-000-81-47-307-0024, C046-000-81-47-307-0025, C046-000-81-47-307-0026, C046-000-81-47-307-0027, C046-000-81-47-307-0028, C046-000-81-47-307-0029, C046-000-81-47-307-0030, C046-000-81-47-307-0031, C046-000-81-47-307-0032, C046-000-81-47-307-0033, C046-000-81-47-307-0034, C046-000-81-47-307-0035, C046-000-81-47-307-0036, C046-000-81-47-307-0037, C046-000-81-47-307-0038, C046-000-81-47-307-0039, C046-000-81-47-307-0040, C046-000-81-47-307-0041, C046-000-81-47-307-0042, C046-000-81-47-307-0043, C046-000-81-47-307-0044, C046-000-81-47-307-0045, C046-000-81-47-307-0046, C046-000-81-47-307-0047, C046-000-81-47-307-0048, C046-000-81-47-307-0049, C046-000-81-47-307-0050, C046-000-81-47-307-0051, C046-000-81-47-307-0052, C046-000-81-47-307-0053, C046-000-81-47-307-0054, C046-000-81-47-307-0055, C046-000-81-47-307-0056, C046-000-81-47-307-0057, C046-000-81-47-307-0058, C046-000-81-47-307-0059, C046-000-81-47-307-0060, C046-000-81-47-307-0061, C046-000-81-47-307-0062, C046-000-81-47-307-0063, C046-000-81-47-307-0064, C046-000-81-47-307-0065, C046-000-81-47-307-0066, C046-000-81-47-307-0067, C046-000-81-47-307-0068, C046-000-81-47-307-0069, C046-000-81-47-307-0070, C046-000-81-47-307-0071, C046-000-81-47-307-0072, C046-000-81-47-307-0073, C046-000-81-47-307-0074, C046-000-81-47-307-0075, C046-000-81-47-307-0076, C046-000-81-47-307-0077, C046-000-81-47-307-0078, C046-000-81-47-307-0079, C046-000-81-47-307-0080, C046-000-81-47-307-0081, C046-000-81-47-307-0082, C046-000-81-47-307-0083, C046-000-81-47-307-0084, C046-000-81-47-307-0085, C046-000-81-47-307-0086, C046-000-81-47-307-0087, C046-000-81-47-307-0088, C046-000-81-47-307-0089, C046-000-81-47-307-0090, C046-000-81-47-307-0091, C046-000-81-47-307-0092, C046-000-81-47-307-0093, C046-000-81-47-307-0094, C046-000-81-47-307-0095, C046-000-81-47-307-0096, C046-000-81-47-307-0097, C046-000-81-47-307-0098, C046-000-81-47-307-0099, C046-000-81-47-307-0100.
 6. HDPE PIPE SHALL BE REPAIRED ON THE 2/3 OF PIPE SECTION PERFORATIONS SHALL BE 10mm @ 57mm C/C IN A TRIANGULAR GRID PATTERN.

REF. DWS. NO.

REFERENCE DRAWING TITLE

REV.	DATE	REVISIONS	BY	CHKD	APPD	PRP
4	27-05-23	ISSUED FOR TENDER	AS	ROUJARE	WPT	-

ENGINEERS
INDIA LIMITED
A COMPANY OF INDIA (INCORPORATED)

INDIAN STRATEGIC PETROLEUM RESERVES LTD. (ISPR)

PERMANENT RESTORATION WORKS OF EXPOSED 42" ISPR PIPELINES

SLOPE PROTECTION SCHEME FOR ISPR PIPELINE
(LOCATION - NEAR BALLA VILLAGE AT CHAINAGE 2 K.M.)

SCALE	C/SR NO.	LINER	DIVAL	DEPT.	DWG. NO.	REV.
1:100	C046	000	81	47	11001	A

3-11-14-0001 REV:02 A-14-11-004